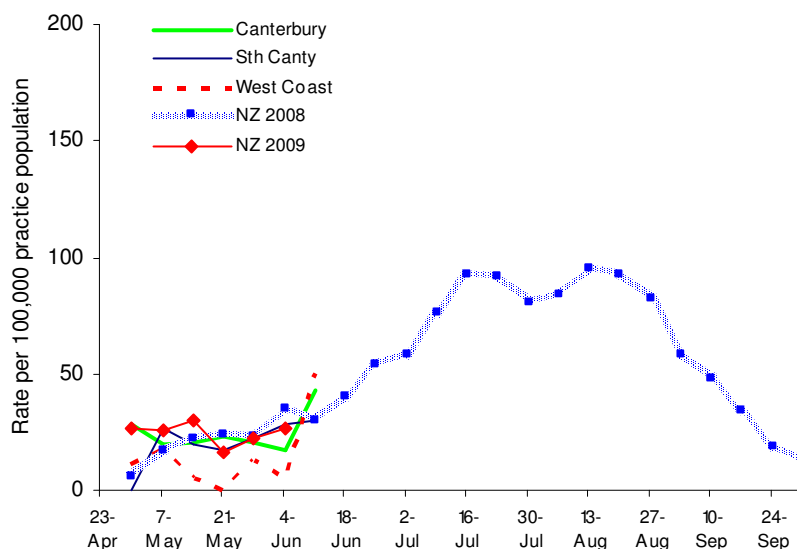


C&PH Influenza Surveillance 2009

Summary graph of influenza-like illness surveillance by 19/24 Canterbury, 9/10 South Canterbury and 6/8 West Coast sentinel medical centres for the week ending Thursday 11 June 2009, and for New Zealand 2008 and 2009.



Thresholds Used To Describe Influenza-Like Activity

	Weekly rate per 10 ⁵ practice population
Baseline	≤49
Normal seasonal activity	
low	50–99
moderate	100–149
high	150–249
Higher than expected	250–399
Severe epidemic	>400

Peter Mitchell
Medical Officer
For Medical Officer of Health